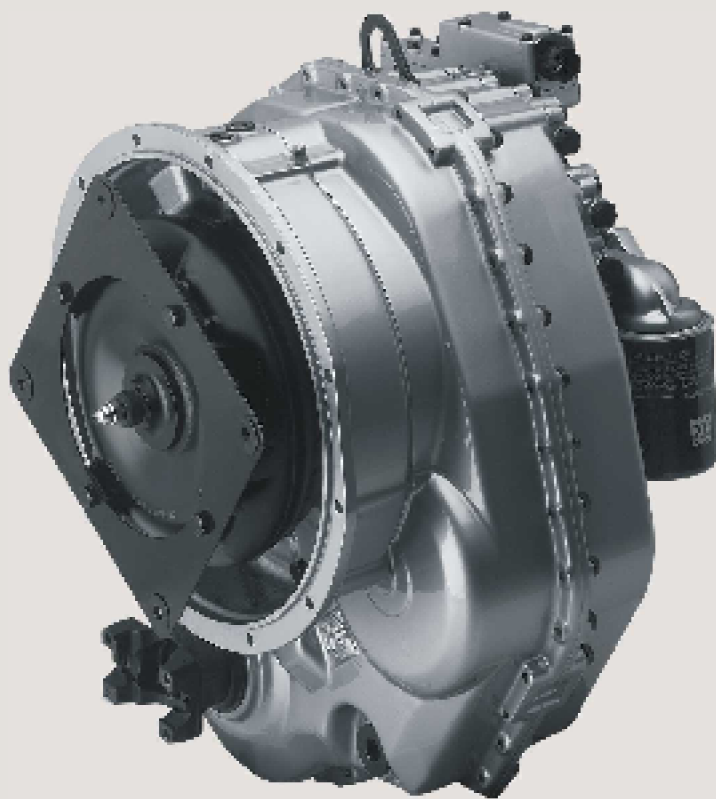


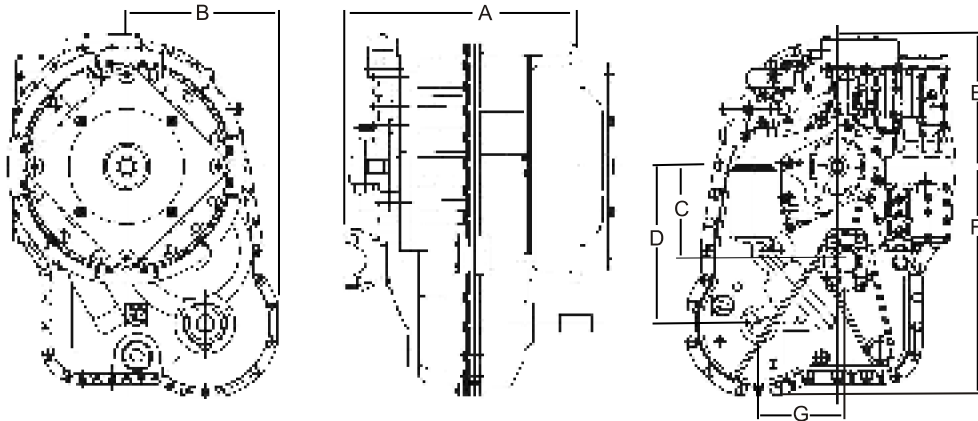
The WG 92/98 Series

The demands on small, self-propelled off-road vehicles are continually increasing. This is particularly true in inner-city areas where modern vehicles must in future be more mobile and manoeuvrable. This trend is also expected to continue with backhoe loaders and telescopic handler. The shuttle transmission WG 92/98 offers optimum conditions both for quick reversing and for high road speeds. Its design characteristics are modern and according to the state of the art.



- Application tuned
- Efficient and easy handling
- Optionally disconnected front axles
- Noise optimized
- Customer orientated serviceability
- Improvement of shift quality





Installation Drawing

Option	Unit	Type WG 92	Type WG 98
A	mm	442	442
B	mm	289	289
C	mm	300	300
D	mm	180	180
E	mm	250	250
F	mm	439	439
G	mm	150	150

Technical Data

Option	Unit	Type WG 92	Type WG 98
Gross Vehicle Weight	max. t	8	12
Max. Engine Power	kW	65	90
Max. Engine Speed	1/min.	2.600	2.600
Max. Turbine Torque	Nm	350	480
Converter	TM/Nm	680	830
Transmission		Powershiftable	Powershiftable
PTO		centr.engine dep	centr.engine dep
Front Axle Drive(4WD)		opt. ratio 1,0	opt. ratio 1,0
Weight	kg	230	230