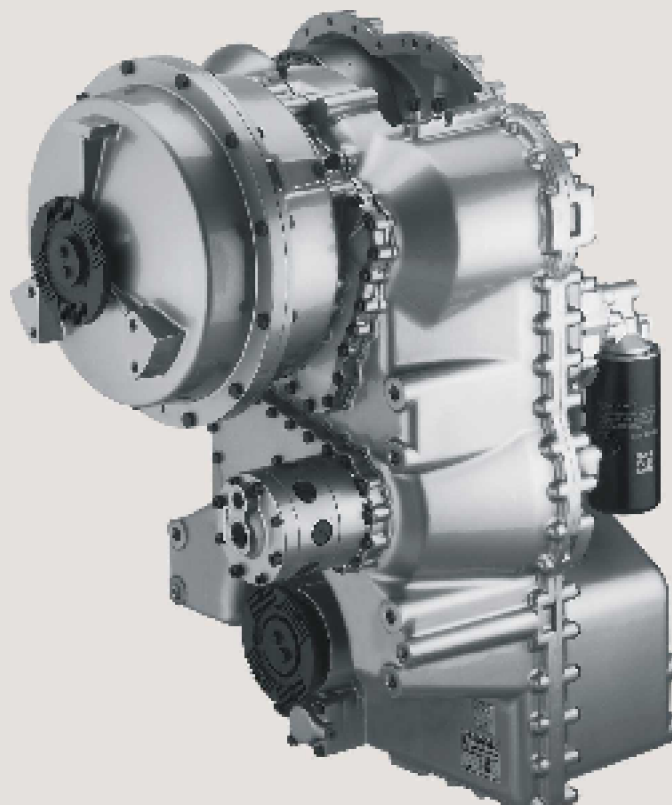


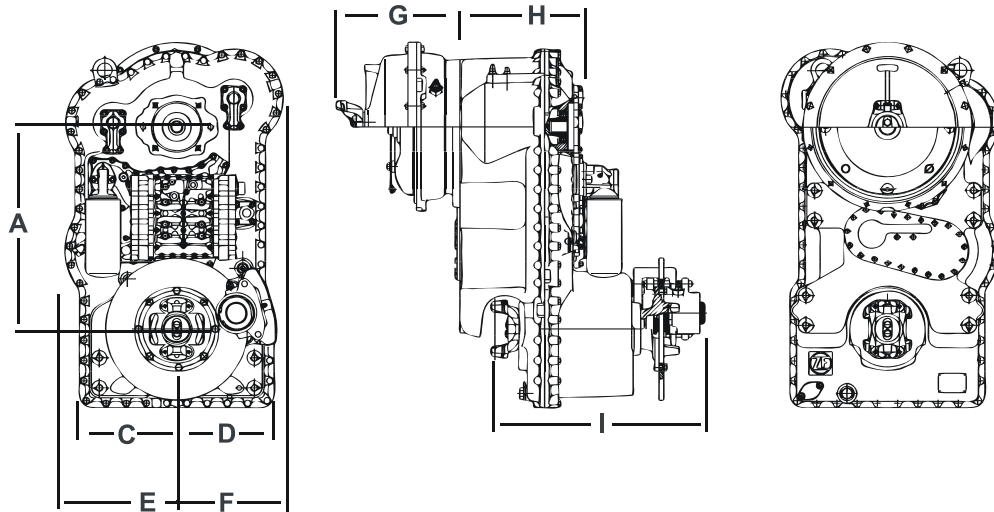
ZF Ergopower

We develop innovative system transmissions representing a high added value for any construction machine. Maximum power utilization, optimum shifting quality without tractive effort interruption, easy maintenance and diagnostics combined with low noise emission delivers transmission technology being of equal benefit to the vehicle owner and the driver. ZF Ergopower transmissions offer completely new standards to the market. Helical gears with high tooth contact errors. Vertical arrangements of spur gear ratios bridges the difference in height between input and output shaft, allowing the axle differential to be integrated into the housing. No additional transfer box is required.



- Reduction of operation costs noise optimized
- Improvement of shift quality
- Comfortable, easy handling
- High flexibility
- Customer orientated service ability
- Vehicle specified control units
- Various vehicle applications





Installation Drawing

Option	Unit	Type WG 115	Type WG 130	Type WG 160	Type WG 190	Type WG 210
A	mm	500	500	500	540	540
B	mm	496	496	496	520	520
C	mm	516	516	516	581	581
D	mm	329	329	329	329	329
E	mm	270	270	270	304	304

Technical Data

Option	Unit	Type WG 115	Type WG 130	Type WG 160	Type WG 190	Type WG 210
Engine Power	max. kW	90	130	160	190	230
Turbine Torque	max. Nm	750	900	1.100	1.500	1.700
Stall Torque Ratio 4WG		2,0-3,0	2,0-3,0	2,0-3,0	2,0-3,0	2,0-3,0
Stall Torque Ratio 6WG		1,5-2,5	1,5-2,5	1,5-2,5	1,5-2,5	1,5-2,5
Engine Speed	max. rpm	2.600	2.600	2.600	2.600	2.600
Engine Driven	max. Nm	800	800	800	800	800
PTO Units	rpm	1,0 x engine speed	1,0 x eng. sp.	1 x eng. sp.	1,0 x eng. sp.	1,0 x eng. sp.
Weight 4WG	ca. kg	360	360	360	480	480
Weight 6WG	ca. kg	360	360	400	640	640
Oil Capacity	ca. dm ³	21	21	21	26	26